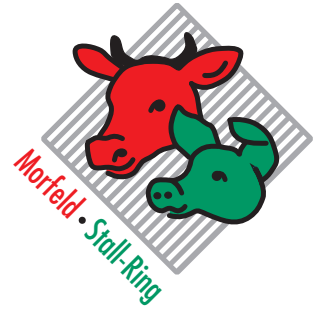


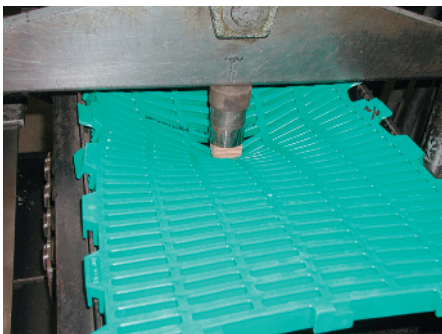
Drucklastprüfungen Kunststoffroste



ZEMLABOR

INSTITUT FÜR BAUSTOFFPRÜFUNGEN
DR IN G STRUTH GMBH

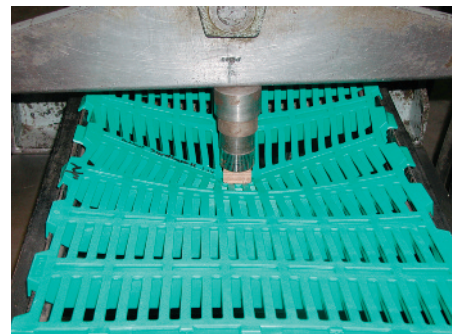
Picco 400 Abferkelrost



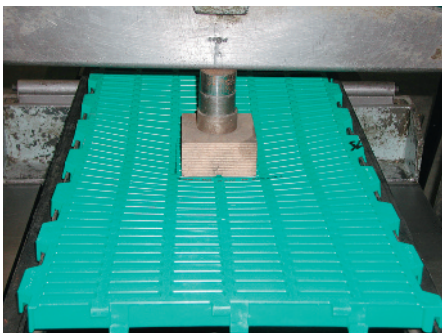
Druckbelastung 820,0 kg

**Punktlast
30 x 40 mm**

Piccolino 450 Ferkelrost

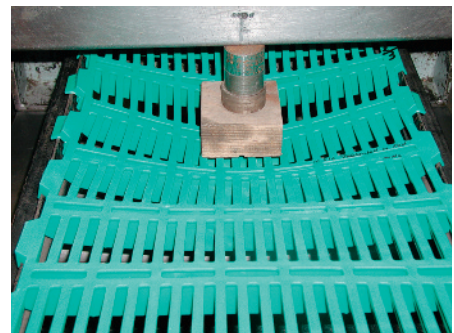


Druckbelastung 600,0 kg

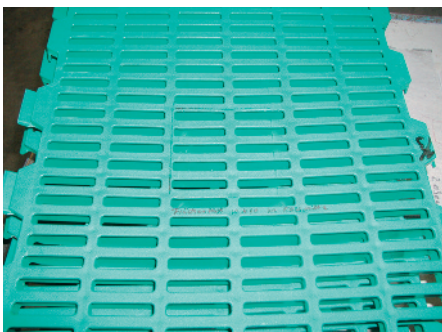


Druckbelastung 830,0 kg

**Flächenlast
100 x 100 mm**

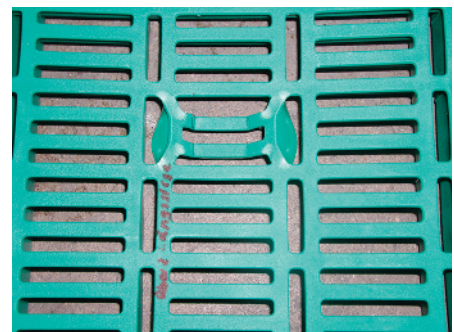


Druckbelastung 730,0 kg



Kein Bruch !!

Nach Belastung



Kein Bruch !!