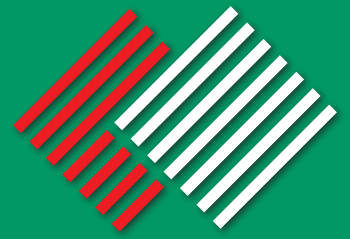
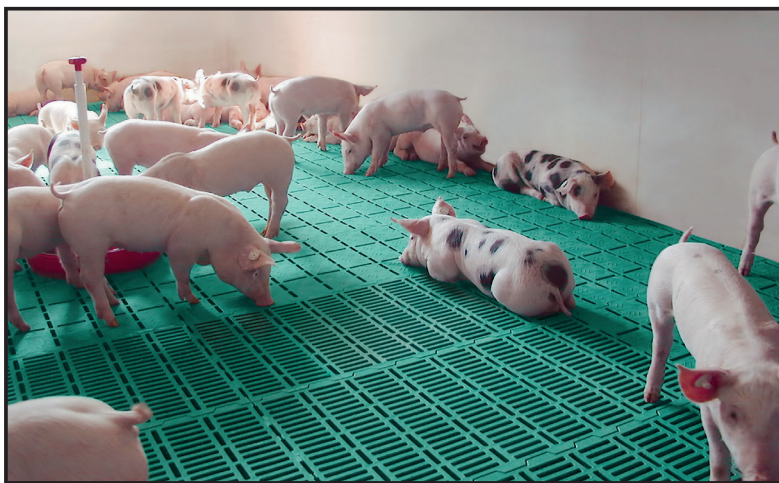


Stall-Ring

FLOORING SYSTEMS FOR PIGS



Product overview



Plastic slats • Cast-iron slats • Heat pads





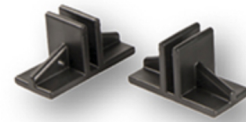
Plastic slats

▼ Piccoletto - weaner plastic slat for flatdecks (up to 35 kg)



Piccoletto 810-green

Combinable with
Piccolino 800 - 802

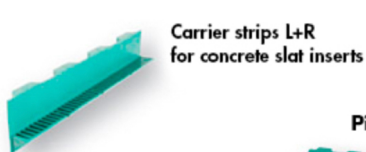


Support foot for
steel support beams

Weaner - plastic slats for flatdecks made of PPC - Polypropylen

Piccoletto - weaner slats	sizes mm width x length	gap width	bar width	support high	weight/ piece	for weaners
Piccoletto 810 - green	800 x 1000	10 mm	10 mm	12 mm	5,75 kg	up to 35 kg
End piece	-	-	-	12 mm	0,010 kg / pc	-
Support foot	Support foot for 5 mm steel support beams				0,016 kg / pc	-

▼ Piccolino - weaner plastic slats for flatdecks and grower pens (up to 50 kg)



Carrier strips L+R
for concrete slat inserts

Piccolino 450

- width -

- length -

Piccolino 451

Piccolino 800

- width -

- length -

Piccolino 801

Piccolino 802

Piccolino 800 - 802
combinable with Piccoletto 810

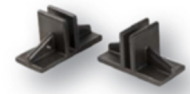
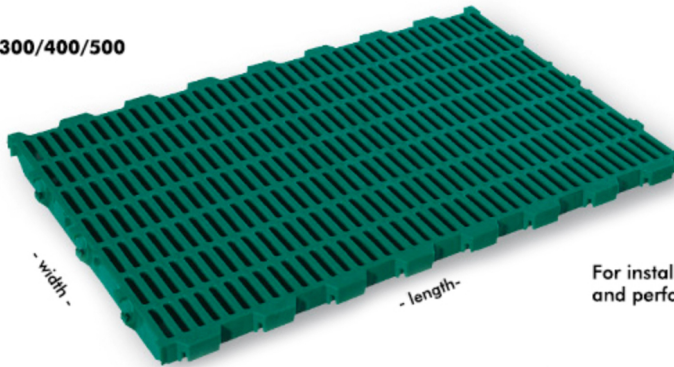
Weaner - plastic slats for flatdecks and grower pens made of PPC - Polypropylen

Piccolino - weaner slats	sizes mm width x length	gap width	bar width	support high	weight/ piece / pair	for weaners
Piccolino 450	450 x 800	10 mm	10 mm	12 mm	2,70 kg / pc	up to 50 kg
Piccolino 451	450 x 800	closed surface with 2% openings		12 mm	3,00 kg / pc	
Piccolino 800	800 x 800	10 mm	10 mm	12 mm	5,55 kg / pc	
Piccolino 801	800 x 800	closed surface with 10% openings		12 mm	5,75 kg / pc	
Piccolino 802	800 x 800	closed surface		12 mm	5,85 kg / pc	
Carrier L+R	400 mm length	Carrier strips (left+right) for concrete slat inserts			0,400 kg / pair	-
End piece	-	-	-	12 mm	0,010 kg / pc	-
Support foot	Support foot for 5 mm steel support beams				0,016 kg / pc	-



▼ **Picco - farrowing plastic slats for straight farrowing pens and perforated doorways** (up to 200 kg)

Picco 200/300/400/500



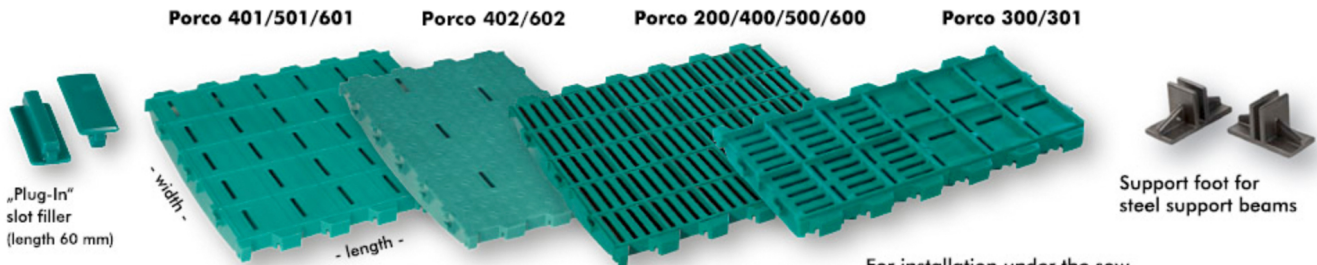
Support foot for steel support beams

For installation in creep areas, in front, behind or beside sows and perforated doorways. Temporary loading up to **200 kg**.

Farrowing - plastic slats for straight farrowing pens and perforated doorways made of PPC - Polypropylen

Picco - farrowing slats	sizes mm width x length	gap width	bar width	support high	weight/ piece	for type of pens
Picco 200	200 x 400	10 mm	10 mm	12 mm	0,54 kg	straight farrowing pens (in piglets areas) and perforated doorways
Picco 300	300 x 400	10 mm	10 mm	12 mm	0,90 kg	
Picco 400	400 x 800	10 mm	10 mm	12 mm	2,55 kg	
Picco 500	500 x 800	10 mm	10 mm	12 mm	3,80 kg	
End piece	-	-	-	12 mm	0,010 kg	
Support foot	Support foot for 5 mm steel support beams				0,016 kg	

▼ **Porco - sow plastic slats for straight and diagonal farrowing pens** (up to 300 kg)



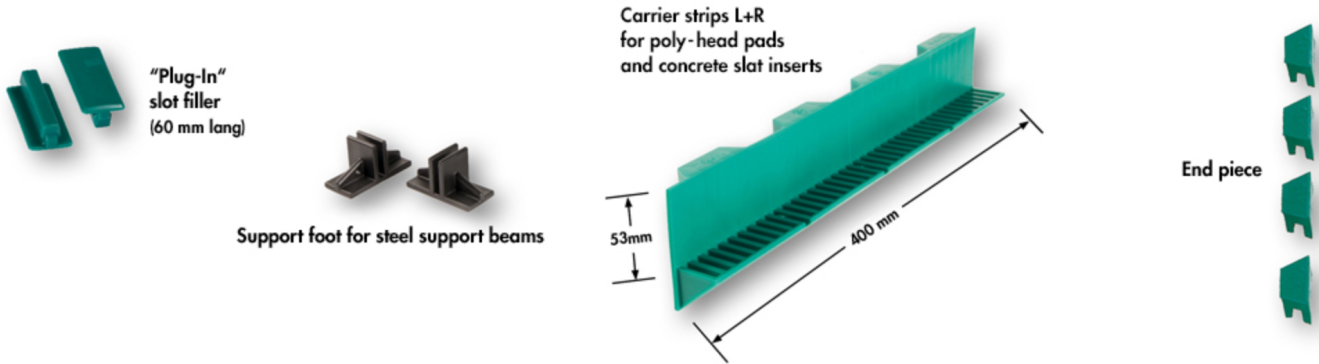
For installation under the sow. Sow area load bearing up to **300 kg** weight.

Sow - plastic slats for straight and diagonal farrowing pens made of PPC - Polypropylen

Porco - sow slats	sizes mm width x length	gap width	bar width	support high	weight/ piece	for type of pens
Porco 200	200 x 400	10 mm	15 mm	12 mm	0,75 kg	farrowing pens
Porco 300	300 x 300	10 mm	15 mm	12 mm	0,96 kg	
Porco 301	300 x 300	closed surface with 10% openings		12 mm	0,97 kg	
Porco 400	400 x 600	10 mm	15 mm	12 mm	2,45 kg	
Porco 401	400 x 600	closed surface with 6% openings		12 mm	2,55 kg	
Porco 402	400 x 600	closed surface with drainage		12 mm	2,52 kg	piglets resting areas
Porco 500	500 x 600	10 mm	15 mm	12 mm	3,35 kg	farrowing pens
Porco 501	500 x 600	closed surface with 6% openings		12 mm	3,55 kg	
Porco 600	600 x 400	10 mm	15 mm	12 mm	2,62 kg	
Porco 601	600 x 400	closed surface with 6% openings		12 mm	2,82 kg	
Porco 602	600 x 400	closed surface with drainage		12 mm	2,82 kg	piglets resting areas
Plug-In	Slot filler for Porco 401/402, Porco 501, Porco 601/602				0,010 kg	-
End piece	-	-	-	12 mm	0,010 kg	-
Support foot	Support foot for 5 mm steel support beams				0,016 kg	-



▼ Accessories for plastic slats, poly head pads and concrete slat inserts

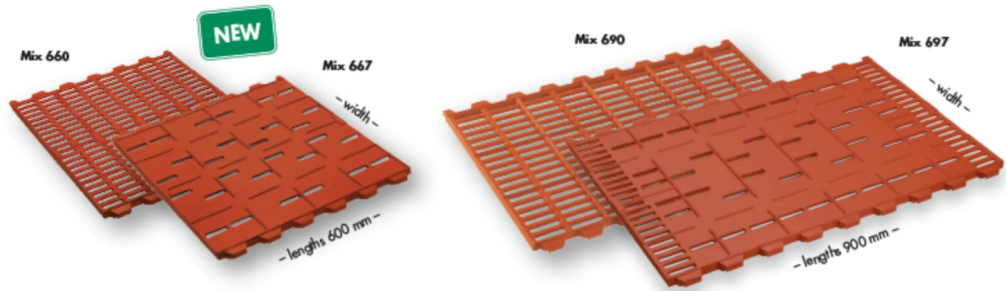
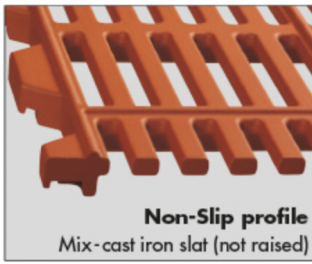


Accessories	sizes mm width x length	gap width	bar width	support high	weight/ piece
Plug-In	Slot filler for Porco 401/402, Porco 501, Porco 601/602				0,010 kg
Support foot	Support foot for 5 mm steel support beams				0,016 kg
Carrier L+R	400 mm length	Carrier strips (left+right) for poly-head pads and concrete slat inserts			0,400 kg / pair
End piece	-	-	-	12 mm	0,010 kg / pc



Cast iron slats

▼ Mix - cast iron slats for farrowing pens



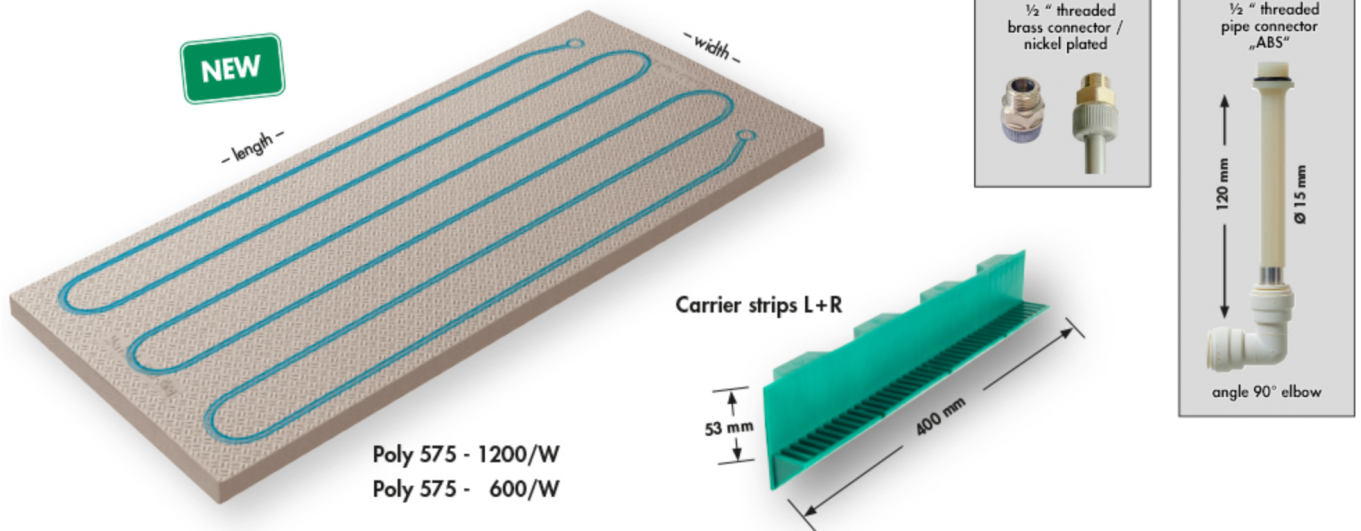
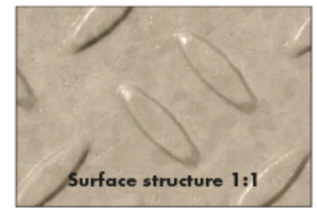
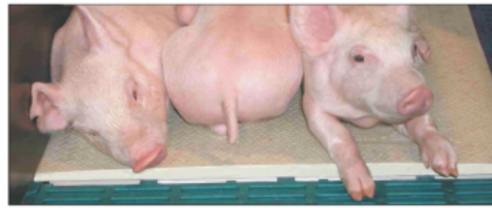
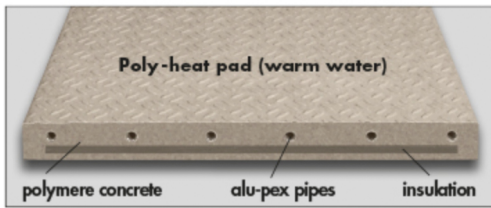
Mix - cast iron slats made of FERRO - cast iron for farrowing pens

Mix - cast iron slats	sizes mm width x length	gap width	bar width	support high	floor level	weight/ piece	for type of pens
Mix 660	600 x 600	10 mm	15 mm	12 mm	even	18,5 kg	Farrowing pens
Mix 667	600 x 600	closed surface with 5% openings		12 mm	even	21,5 kg	
Mix 690	600 x 900	10 mm	15 mm	12 mm	even	28,0 kg	Farrowing pens
Mix 697	600 x 900	closed surface with 7% openings		12 mm	even	30,0 kg	



Heat pads

▼ Poly - heat pads for farrowing pens (up to 35 kg)



Poly 575 - 1200/W
Poly 575 - 600/W

Poly - heat pads made of Polymere-concrete

Poly - heat pads	sizes mm width x length	heat source	power pad / hour	supp. direction to the pad	weight/ piece	for type of pens
Poly 400/W	400 x 1200	warm water	150 W / 75 W	lengthways	24,0 kg	farrowing pens
Poly 450/W	450 x 1350	warm water	180 W / 90 W	length- & crossways	37,0 kg	flatdecks
Poly 600/W	600 x 1200	warm water	220 W / 110 W	length- & crossways	41,0 kg	farrowing pens
Poly - Clip	assembly piece	-	-	-	0,02 kg	Poly - heat pads
NEW Poly 575-1200/W	575 x 1200	warm water	220 W / 110 W	lengthways	76,0 kg	farrowing pens
Poly 575-600/W	575 x 600	warm water	120 W / 60 W	length- & crossways	38,0 kg	farrowing pens
Carrier L+R	-	Carrier strips 400 mm long x 53 mm high			0,400 kg / pair	Poly - heat pads

Up to **eight warm water heat pads** can be connected in series to the same water circuit. The connection and start-up of our heat pads are to be performed by qualified and experienced installer.